

U N Y I E L D I N G
S ∞ N D E R

QUIET BUT MULTIFACETED VOICES BY ASIAN/PACIFIC ISLANDER ARTISTS IN THE U.S.



CURATOR'S STATEMENT

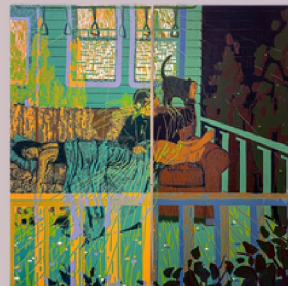
Definition of Sonder:

The realization that every individual has a life as full and central as our own, with others in secondary roles. The concept of sonder suggests that each individual can play multiple roles in various narratives, both as a protagonist and a supporting character.

The experiences of Asian American and Pacific Islander artists are complex and multifaceted as they navigate the intricacies of multicultural worlds while grappling with their split identities. However, their diverse backgrounds afford them distinctive perspectives that inspire making art. This exhibition showcases varied artistic expressions by Asian, Asian-American, and Pacific Islander artists residing in the United States. In the theme of *Unyielding Sonder*, participating artists present a source of empowerment that celebrates the enduring and evolving narratives in the Western world. The exhibition illuminates the challenges and successes of



FOR NANA
GEORGIE O'BRIEN



HARTFORD PATIO, LINE 2, AND ELSEWHERE
ROSA CHANG



CUP SET
YANG LI

these artists through their artwork and personal stories, promoting a deeper understanding and appreciation of their unique perspectives.

Studio Oong is proud to present *Oort Cloud*, a stunning collection of artwork from *Reflections from The Other World*. This exquisite chandelier piece seeks to capture the essence of pure fantasy, drawing inspiration from the organic natural shapes and the Korean tradition of stone collecting called Suseok. In this tradition, stones are valued in their natural form and associated with the beauty of the natural world. By adapting this idea to modern interior design, Studio Oong has created a contemporary interpretation of traditional Korean purity and positivity, merging Korean and American perspectives to develop a fusion of functionality and fantastical forms that bridge reality and fantasy.

Diana Noh displays unsettling photographs of abandoned places to delve into the emotional turmoil of growing up between different cultures. She discusses the difficulties and dilemmas of being born in America but raised in an Asian household. Through her art, she deconstructs and reconstructs large-scale photographs to visualize her emotional struggles and the process of healing. Using various stitching techniques on printed paper, she tells the stories of intentionally reconstructed life, revealing how she learned to survive in the Western world as an Asian American.

Georgie O'Brien showcases her paintings that portray her intimate and emotional experiences of living while also placing her Asian heritage in the context of the British and American communities where she belongs. Her paintings create distorted

personal spaces and bodies, presenting a new reality. As an Asian-European residing in the U.S., she blends the art of quilting and Korean Bojagi fiber practice to create a tricultural artistic practice in her painting.

The Unyielding Sonder exhibition showcases an exceptional collection of artworks created by a group of talented multidisciplinary artists. Using 2D, 3D, installation, and video performances, these artists explore thought-provoking themes such as nostalgia, displacement, and intrafamilial dynamics. All the artists in this exhibition are immigrants and American-born Asian/Pacific islanders who use their art to convey their unique perspectives and opinions. This exhibition provides an excellent opportunity for the residents of Cumberland County to learn about minority communities. It is essential to note that the exhibition primarily focuses on Asians, Asian Americans, and Pacific Islanders, who represent a relatively small percentage of the U.S. population. Therefore, this exhibition provides a unique chance for people to gain a comprehensive and engaging understanding of these communities' distinct cultures, traditions, and histories. Visitors can deepen their knowledge of the challenges and triumphs experienced by minority groups, promoting greater empathy, diversity, and inclusivity in our society.



EVER-GIVING
RACHEL JOHNSTON

FEATURED ARTISTS:

- Soeun Bae
- Rosa Chang
- Katie Chin
- Angaea Cuna
- Kim DeBord
- Jacqueline S. Dublin
- Aesum Goh
- Rachel Johnston
- Kimi Kuniyoshi
- Hyohyun (Sophie) Lee
- Joanne Seongweon Lee
- Yang Li
- Jeffrey Luque
- Mable Ni
- Diana Noh
- Georgie OBrien
- Ha Joung Park
- Mary L. Peng
- Millian Giang Pham
- Humna Raza
- Delaney Shin
- Studio Oong
- Tama Takahashi
- GH Wood
- Cherrie Yu



Build your own “Oort Cloud”

OORT CLOUD
STUDIO OONG

Create your own art mobile.
Use the shapes below. Attach a
small string to each shape and tie
the string to a hanger.

Don't stop there! Get creative! Add
glitter or draw on the shapes. Fill
clear ornaments with a bit of paint
and shake to coat the inside. Try
recycled items, too! Anything that
you can attach to your hanger can
be a mobile.

Whatever you're inspired to create,
share it with us by tagging photos
with **@artscouncilfay** on
Facebook & Instagram.

